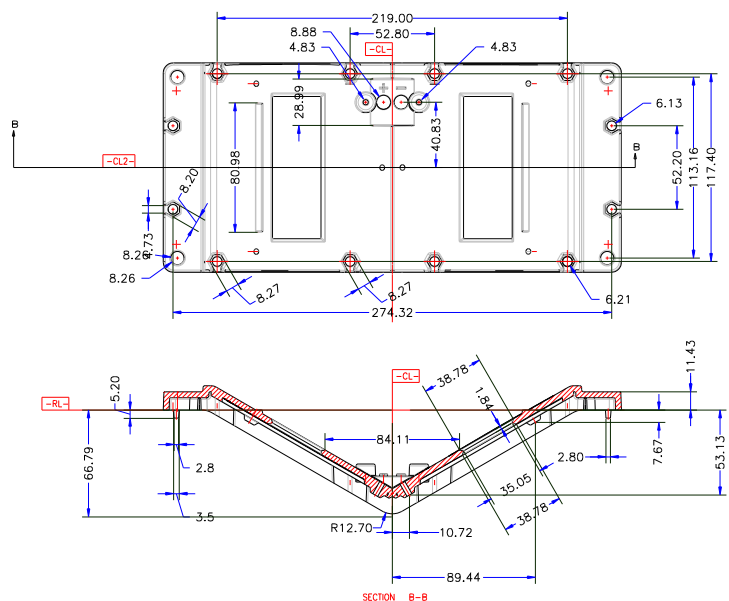
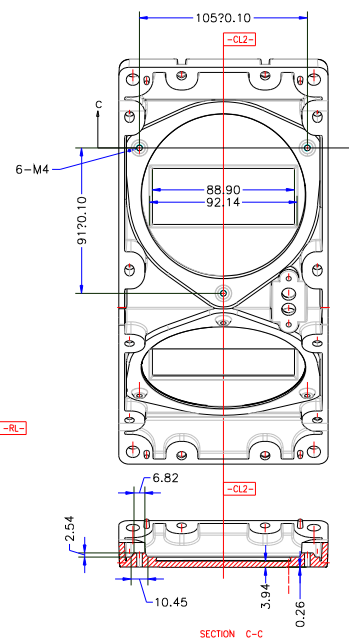
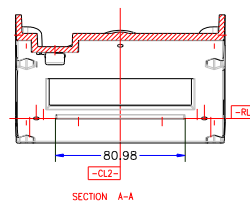
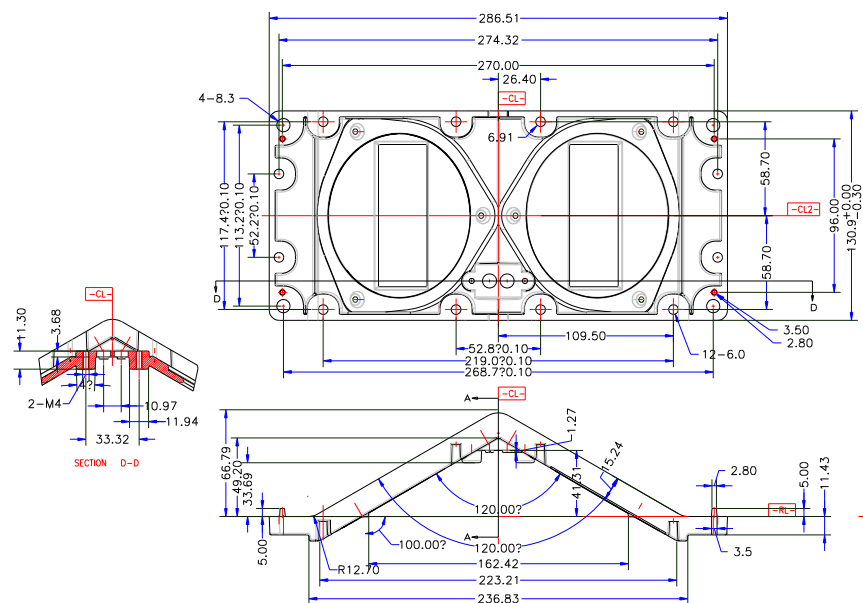


REVISIONS				
REV	DESCRIPTION	CHK	ENG	DATE
1-a				
1-b			HU	07/18/04



NOTES:

Part

Material

Theoretical Weight	0.555Kg
--------------------	---------

Technical

Die-casting machine

Specific pressure 50MPa

Casting temperature 650°C

Alloy brand(wt%)(JIS5302-1976)

(Chemical composition)

Si

Fe

Cu

Mn

Mg

Zn

Ni

$$S_n$$

Al

9.6-12.

1.

1.5–3.5

0.5

0.

1.0


0.5

0.3

Marg

Margin

FINISH: SURFACE BLACK STATIC POWDER SLENDER CORRUGATION FINISH
PART SHALL EXHIBIT NO WHITE RUST AFTER 600 HR
SALT-FOG TEST PER ASTM B117.

Unless otherwise specified dimensions are in millimeter. Tolerances are: Decimals Angles X. + / - + / - .X + / - 0.20 .XX + / - 0.10	THIRD ANGLE PROJECTION	LEVEL	DRAFTER	DATE:	ELDER AUDIO MANUFACTORY				
		3	HU	12/3/02	The Third Industrial District Wentang Dongguan Guangdong 523121 China.				
	CHECKER				DESCRIPTION PT263885				
	MATERIAL: See Notes	2	ENGINEER		CASTING, LOW, VEE-2				
	FINISH: See Notes	1	APP BY	12/3/02	SIZE	FSCM	CLASS	DWG NO.:	REV
					C			B2-YXJP-08 LT9702-II-2-101	1-1
					SCALE: NONE		SHEET of		